

product overview

workholding
rotary



Collets for Lathes, Mills and Grinders

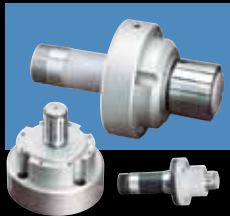
BROCHURE 2348

Hardened and Ground Collets
 Special Accuracy Collets
 Emergency Collets
 Extended-Nose Collets
 Step Collets
 Long Bearing Drill Collets
 Lensmaker Collets
 Style "S" Master Collets and Pads
 B42 and B65 Collets
 Collet Stops
 Expanding Collets
 Dead-Length® Collets and Ejector Stops
 Step Chucks and Closers
 Force-Limiting Step Chucks
 Dead-Length® Emergency Step Chucks
 Dead-Length® Spider Stop Step Chucks
 Manual Chucks
 Fixture Plates



Micromachining and Laboratory Collets

BROCHURE 2349



Sure-Grip® Expanding Collet Systems

BROCHURE 2270

True Parallel Grip
 Dead-Length® Work Stop
 Instant Centering
 5C, 16C, 3J Collet-Styles
 A2 Spindle-Mount Styles
 Center Arbors
 Gripping Range +.015" to -.001"



HQC® Quick-Change Collets for Lathes and Automatics

BROCHURE 2339



Custom Workholding Solutions

BROCHURE 2349

Special Shapes and Accuracies
 Special Materials
 Non-Round Parts
 Eccentric, Off-Center, Stepped Parts
 and much more!



Flex-C™ Quick-Change Vulcanized Collet Systems

BROCHURE 2382

A2 Spindle-Mount Styles
 Flat-Back Spindle Mount Styles
 42, 65 and 80mm Collets



HCAC® Collet Adaptation Chucks

BROCHURE 2352

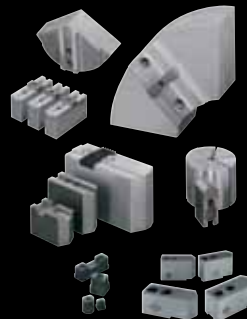
Solid Collets
 Master Collets
 Collet Pads
 5C, 16C, 3J
 22J, 35J, S15, S20, S26, S30
 #21 B&S, #22 B&S
 B42, B60, B65
 DIN 90
 and many more!



Sure-Grip® 3-Jaw Power Chucks

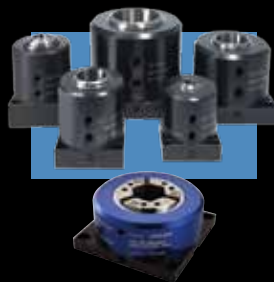
BROCHURE 2357

4" to 12"
 Direct Mount to ANSI A2 Spindles
 Lever-Operated
 Counter-Centrifugal
 and Dynamically Balanced
 Quick-Change Models Available



Jaws for all Brands of Chucks

BROCHURE 2358



Collet Blocks

BROCHURE 2365

Hydraulic, Pneumatic
 1C, 3C, 5C, 16C, 3J, 22J and 35J



CATV/BT Flange Tool Holders

BROCHURE 2350



Collets for Automatic Screw Machines, Turret Lathes and Rotary Transfer Machines

BROCHURE 2287

Solid Collets
Burring Collets
Feed Fingers
Bushings
Master Collets
Collet Pads
Emergency Collets



Swiss-Style Collets, Guide Bushings and Bar Loader Collets

BROCHURE 2283

Headstock Collets
Emergency Collets
Pick-Off Collets
Carbide Guide Bushings
Bar Loader Collets
Tool and Tap Holder Collets



Custom Swiss Collets and Adaptive Guide Bushings for Citizen

BROCHURE 2283



Tool Holders, Toolholder Collets and Bushings

BROCHURE 2351

ER-Style Collets & Tap Collets
ER-Style Collet Holders
DA Double-Angle Collets & Holders
TG-Style Collets
HDO-Style Collets
HF-Style Collets
Cincinnati Monoset Collets
IC Collets & Holders
Hardinge TT Tap Collets & Holders
GK Self-Feeding Tap Collets & Drivers
Bilz-Style Quick-Change Tap Collets
HDB Bushings
HDC Bushings
HDZ Bushings



5C² Indexers

BROCHURE 2372

Gear-Driven
Single, Dual, Triple, Quad Spindles



16² / 3J² Rotary Tables and Indexers

BROCHURE 2372

Gear-Driven
Single, Dual, Triple Spindles



Low-Profile Rotary Tables and Indexers

BROCHURE 2372

Gear-Driven
160 And 210mm Face Plates



Tilting, Dual-Axis Indexers

BROCHURE 2372

Single, Dual, Triple, Quad Spindles



All-Digital Servo Controls

BROCHURE 2372



Plate and Cube Trunnions

BROCHURE 2372



www.shophardinge.com

800.843.8801



Over the years, The Hardinge Group™ steadily diversified both its product offerings and operations. Today, the company has grown into a globally diversified player with manufacturing operations in North America, Europe and Asia. In addition to designing and building turning centers and collets, Hardinge is a world leader in grinding solutions with the addition of the Kellenberger, Jones & Shipman, Hauser and Tschudin brands to the Hardinge family. The company also manufactures Bridgeport machining centers and other industrial products for a wide range of material cutting, turnkey automation and workholding needs.

Expect more from your Hardinge products. Choose Hardinge precision and reliability for increased productivity and value!

Call us today, we've got your answer.

Hardinge Companies Worldwide

North America

Hardinge Inc.
One Hardinge Drive
Elmira, NY 14902-1507 USA
General Information: 607-734-2281
Sales Fax: 607.734.8819
Workholding Fax: 607.734.3886
Service: 800.424.2440
web site: www.hardinge.com
and www.shophardinge.com

In Canada:

Canadian Hardinge Machine Tools Ltd.
Phone: 800.468.5946
Fax: 607.734.8819

China

Hardinge Machine (Shanghai) Co. Ltd.
Hardinge China Limited
No. 1388 East Kang Qiao Road
Pudong, Shanghai 201319
Tel: 0086 21 38108686
Fax: 0086 21 38108681

Germany

Hardinge GmbH
Fichtenhain A 13 C
47807 Krefeld
Germany
Phone: (49) 2151 496490
Fax: (49) 2151 4964999

Taiwan

Hardinge Machine Tools B.V.
4 Tzu Chiang 3rd Road
Nan Tou City
540 Taiwan, R.O.C.
Phone: 886 49 2260536
Fax: 886 49 2252203
e-mail: cs@hardinge.com.tw

Switzerland

L. Kellenberger & Co. AG
Heiligkreuzstrasse 28
Postfach
Ch-9009 St. Gallen
Switzerland
Phone: +41 (0) 71 242 91 11
Fax: +41 (0) 71 242 92 22
e-mail: info@kellenberger.com
web site: www.kellenberger.net

L. Kellenberger & Co. AG

Längfeldweg 107
CH-2500 Biel-Bienne 8
Switzerland
Phone: +41 (0)32 344 11 52
Fax: +41 (0)32 341 13 93
e-mail: info@kellenberger.com
web site: www.kellenberger.net

United Kingdom

Hardinge Machine Tools, Ltd.
Whiteacres
Cambridge Road
Whetstone
Leicester
LE8 6BD England
Tel: +44 (0)116 2869900
Fax: +44 (0)116 2869901
Hardinge e-mail: sales@hardinge.co.uk
Hardinge web site: www.hardinge.co.uk

Jones & Shipman Precision
Limited Murray Field Road
Leicester LE3 1UW, UK
Tel: +44 (0) 116 2013000
Fax: +44 (0) 116 2013001
e-mail: info@jonesshipman.com
web site: www.jonesshipman.com